



Perth Amboy Artswalk

November 5th, 6pm
Patten Park
339 Reade Street

Hosted by the City of Perth Amboy
and P.A.R.T.N.E.R



Meet the artists
and their work



Tribute to
National Arts &
Humanities

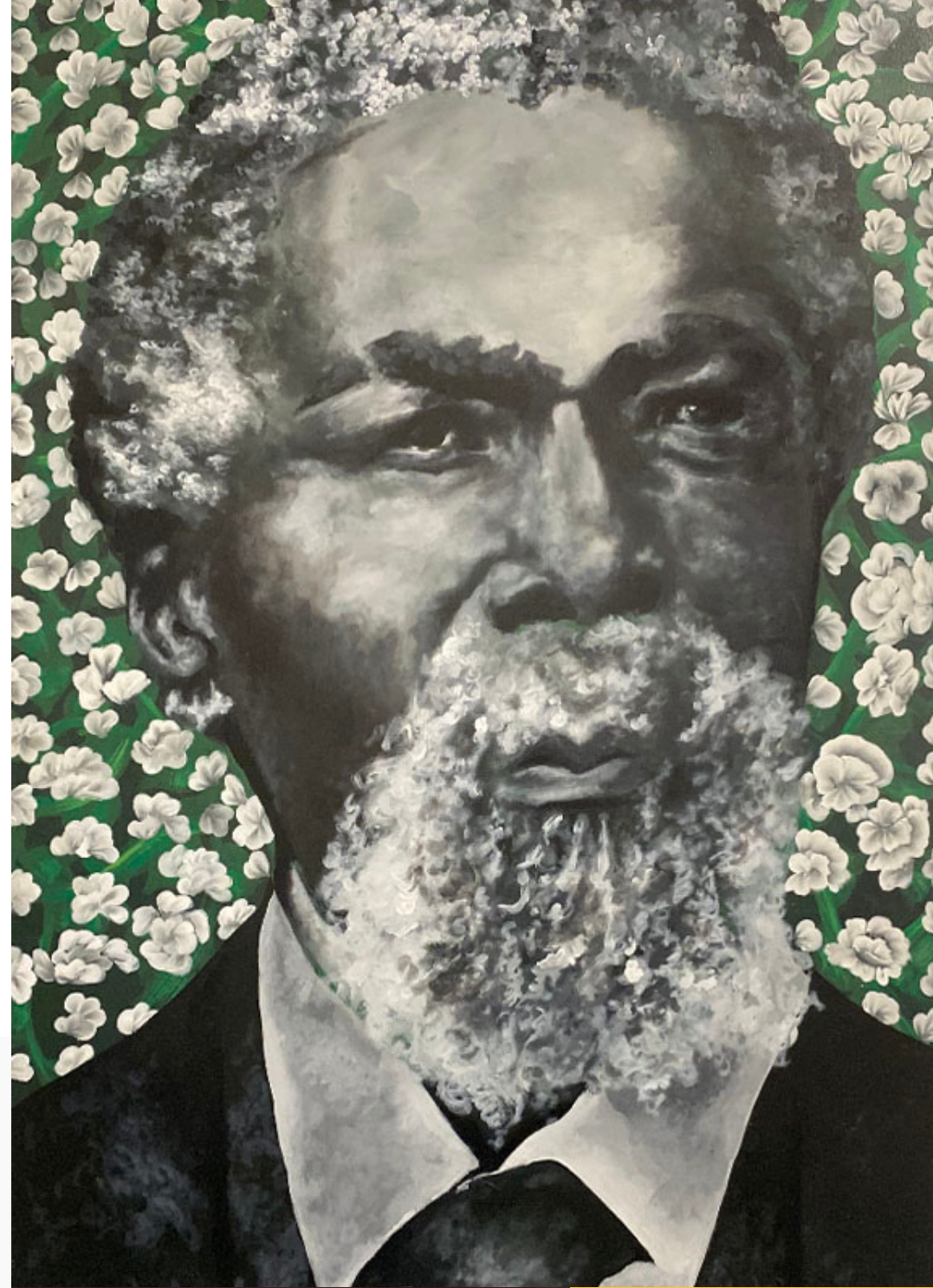
About the Perth Amboy Artswalk

A GNC event, the Perth Amboy ArtsWalk will feature the temporary installation of 14 art panels in Patten Park.

The outdoor walkable arts showcase intends to raise public awareness about the role the arts and humanities play in our communities and lives.

The event is a tribute to Arts and Culture Month by 3 local artists whose art will be displayed throughout Patten Park. Art panels will depict Van Gogh, Dali, Thomas Mundy Peterson, Frida, Tower of David, and more.

Masks and socially distant guidelines are required.





Julisa Marie Mugica

Julisa Marie Mugica is a Dominican-Cuban Latin Artist born and raised in Perth Amboy, NJ.

Julisa attended New Jersey City University where she obtained her Painting Bachelors in Fine Arts Degree. Recently, Julisa's theme revolves around the idea of the existence and presence of the women surrounding her since of a young age, bringing a great sense of recognition to her firm latin roots.

Overall, "identity" is the essence from which her pieces arise; Julisa's oil paintings emphasizes the models character and persona by exaggerating their features (wrinkles, eyes, beauty marks, scars).

Julisa's choice of mediums include a combination of oil, acrylic, pastel, watercolor, ceramics, and as of recent, latin herbs and spices as a form of pigmentation.



Solanyi Peña

Solanyi Peña (Soly) is a skilled self-taught Dominican artist born and raised in Perth Amboy, New Jersey.

Soly recognized her interest in art at the age of 6. It was not until she was 13 that she started drawing and taught herself the "basics" of art; from form and perspective, to proportion and color theory. Soly started her sophomore year of high school (2014-2015) in Perth Amboy high school, there, she learned the fundamentals of portrait drawing.

It was at this point, Soly acknowledged her interest in people and the human face. After graduating Perth Amboy high school (2017), she delved more into portraiture; studying the human body, faces, and the power of expression. Facial expressions are among the most universal forms of body language. Expressions convey fear, anger, happiness, sadness etc. Her goal in all her portrait pieces is to depict the person with raw, powerful emotion. Soly has worked/ works with a variety of mediums and techniques.

Her artwork has a realistic and abstract style; normally having a person/portrait (realism) and different colors, shapes, or lines in the background and or around (abstract).

Julio Curbelo

My name is Julio Curbelo (JCee). I am a self-taught Puerto Rican artist from Perth Amboy, New Jersey. My art is my passion! I don't hold myself down to any mediums; I work with a range from spray paint to acrylic to oils! I've been an artist since I was 12 years old. It was after suffering a heart attack at the age of 39, I started painting more abstract and hearts on all my paintings to which I began to develop my own style, graffiti abstract.

My influences are New York City graffiti artists like Sen2/Seen (Sandro Figueroa); the vibrant colors, abstract shapes and lines contribute to my urban aesthetic technique.

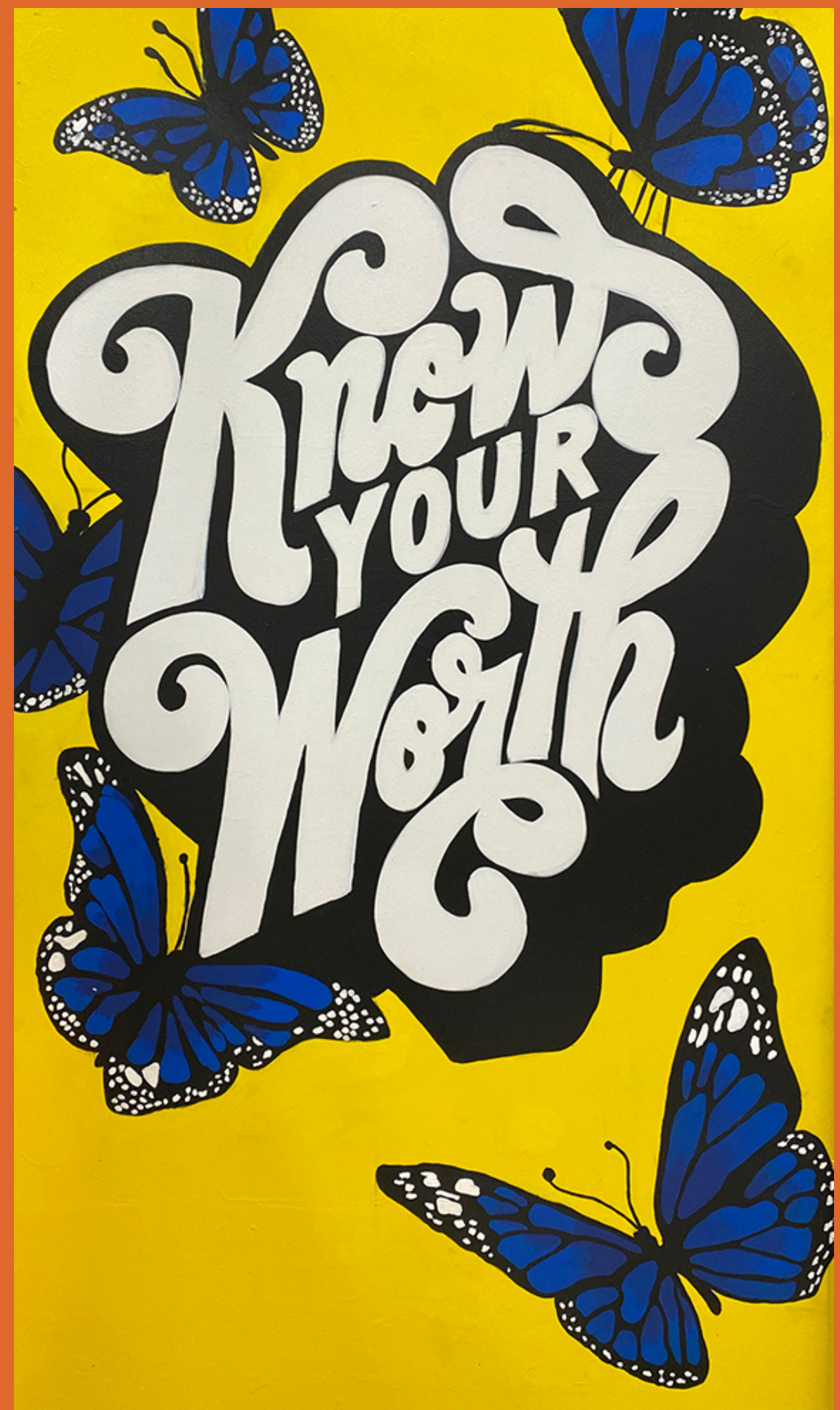


"Know
Your
Worth"

4FT X 8FT

Exterior acrylic paint on metal panel

Made by Soly



Clemente

4FT X 8FT

Spray paint and Exterior acrylic paint on metal panel Roberto Clemente was a famous Puerto Rican baseball player who was involved in charity work in the Latin American and Caribbean countries.

This piece pays homage to Roberto Clemente and also honors my late father. I made this piece for my father, who just like me, was a big fan of Roberto Clemente.

Made by Julio Curbelo





The Spider

4FT X 8FT

Spray paint and Acrylic Exterior paint on metal panel
Being a big marvel fan, I went with Miles Morales aka Spider-Man.

Miles Morales is the 1st Afro Latino Spider-Man in Marvel.
Miles Morales was also born and raised in Brooklyn NY.

Made by Julio Curbelo



Frida

4FT X 8FT

Exterior acrylic paint on metal panel

“Frida” is a 4FTX8FT acrylic painting that depicts a more feminine side of the late artist Frida Kahlo.

In this painting Frida is presented with flowers around her, and a gentler facial expression.

Made by Soly



Salvador's Watches

4FT X 8FT

Exterior acrylic paint on metal panel

Salvador Dali is the world's best-known surrealist artist.

"Salvador's Watches" portrays Salvador Dali's eccentric personality alongside one of his most famous pieces, "The Persistence of Memory".

Made by Soly

R|R

Thomas Mundy Peterson of Perth Amboy

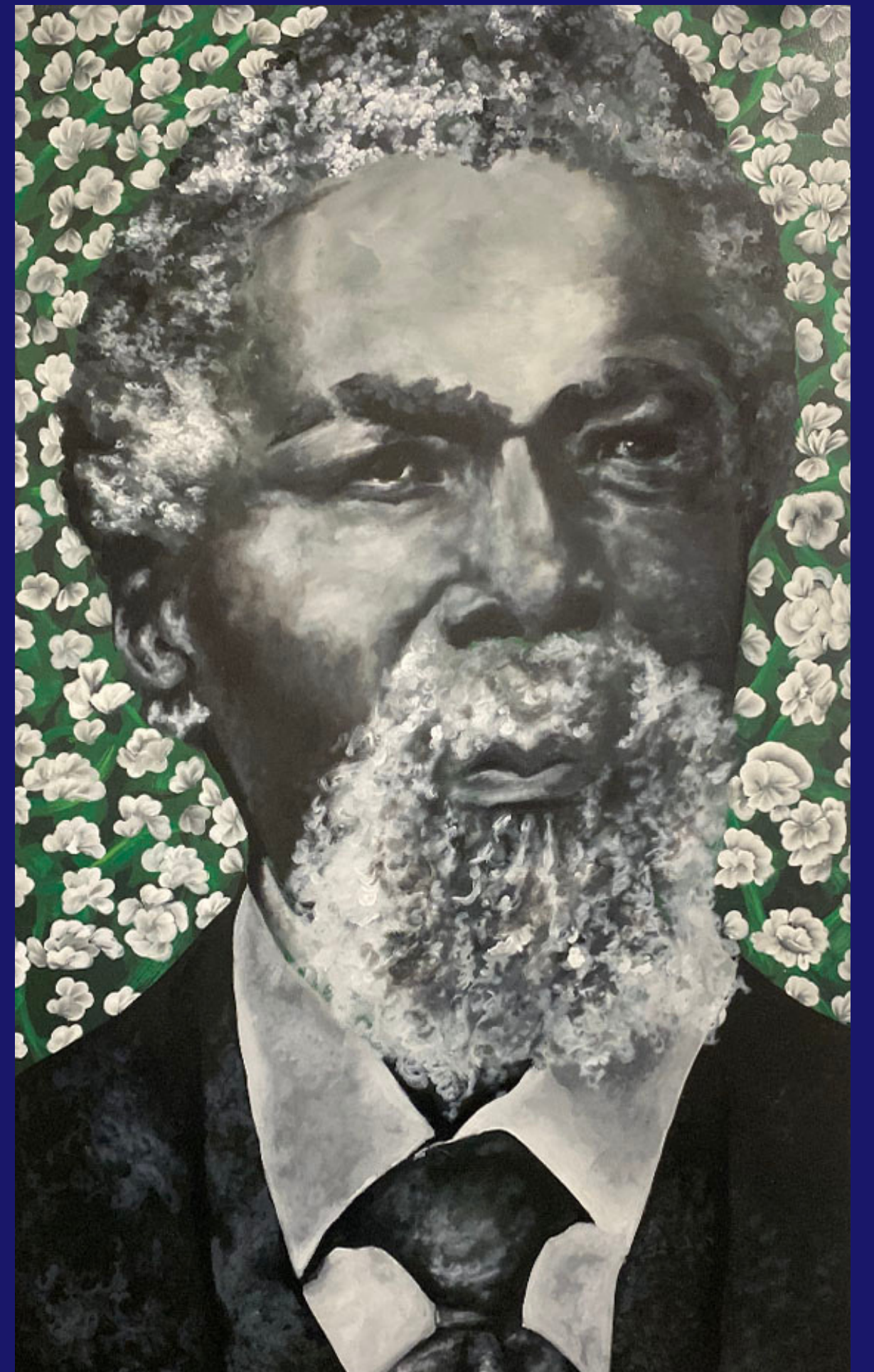
4FT X 8FT

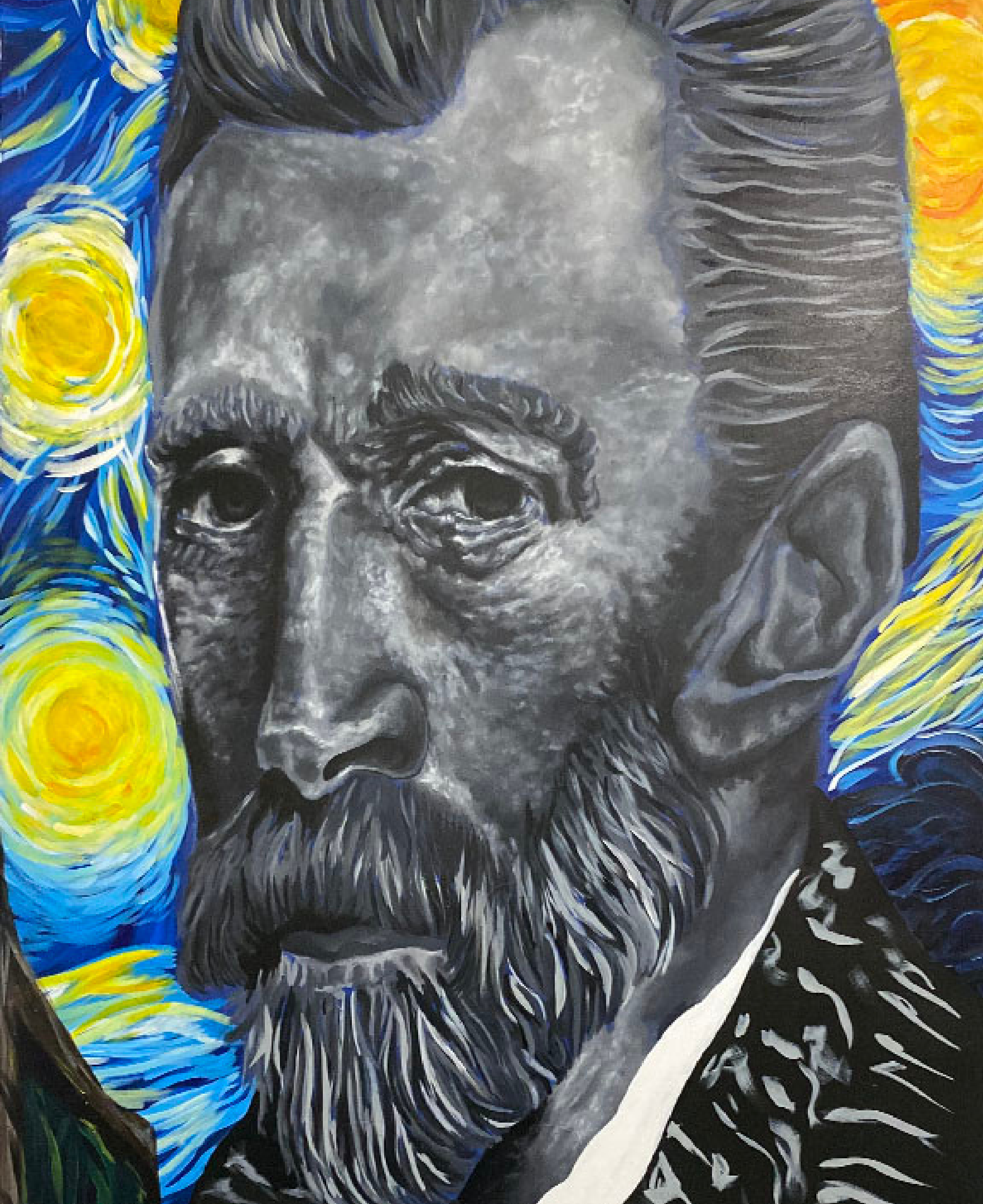
Exterior acrylic paint on metal panel

Thomas Mundy Peterson was the 1st African American to vote in the United States after the passage of the 15th Amendment.

The white petals around Thomas represent new beginnings.

Made by Soly





Van Gogh

4FT X 8FT

Exterior acrylic paint on metal panel

Van Gogh had an eccentric personality and unstable moods.

Exterior acrylic painting that represents the Van Gogh with one of his most famous pieces, "Starry Night". Van Gogh painted his most famous painting in an insane asylum.

Made by Soly

Astro

4FT X 8FT

Exterior acrylic paint on metal panel

Made by Soly





"Rise & Grind"

"Stronger Together"

4FT X 8FT

Exterior acrylic paint on metal panel

Made by Soly



"Independent Creature"



4FT X 8FT

For some time now, Julisa has been painting portraits surrounding the history of Latin Women. The women have been either that of famous singers and artists as well as portraits of women within her own family.

For the panel, Julisa has decided to paint a portrait of an unknown woman who is in a locked gaze face to face with a fierce looking tiger.

It has been said that Cat is seen to be the best animal to describe women as independent creatures and also for their romantic qualities.

This painting represents independence, passion and leadership; all in which the artist feels is a collective of what a woman has within her soul.



Statue of David

4FT X 8FT

Exterior acrylic paint on metal panel

Michelangelo's David is one of the most recognized works of Renaissance sculptors. The statue of David is a symbol of strength and youthful beauty.

Made by Soly



Everlasting Bond

4FT X 8FT

Exterior acrylic paint on metal panel

“Everlasting Bond” is a 4FTX8FT painting that pays homage to the late Kobe Bryant and his close relationship with Michael Jordan and his friendly rivalry with LeBron James.

Made by Soly

Thank You.

This event was made possible through the Wells Fargo Regional Foundation.

P.A.R.T.N.E.R. is a renewal grantee for the Gateway Neighborhood Revitalization Plan for 2020-2025.

Follow us at www.partnernj.org or on Facebook @LiveWorkPlayInGateway.

